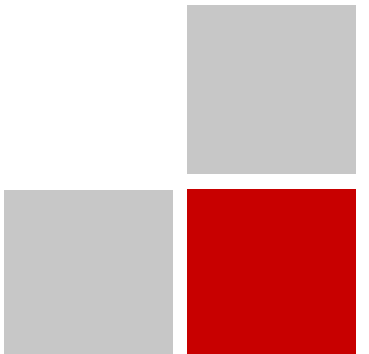
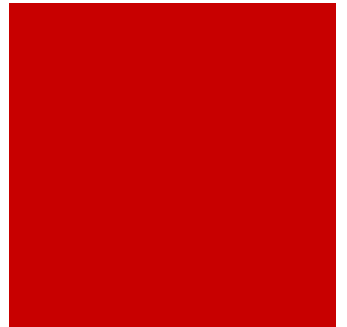
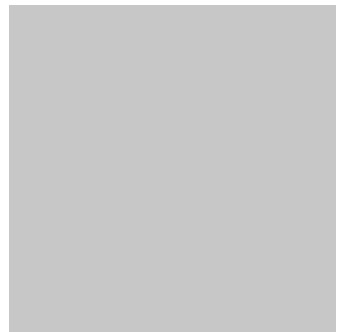


KELLER
Standard for clean air

Keller USA, Inc.



Dust Collection

solution for dry dust filtration

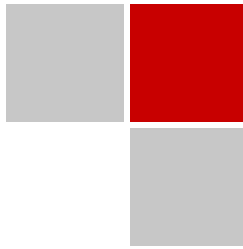


- Modular design
- KLR-Filter®, or Dry-P cartridge
- Airflow: 500- 16,000* cfm*



- All-in-one collector for thermal cutting
- Integrated spark arrestor
- Airflow: 600-3,000 cfm*

L-CUT



Applications:

- | | |
|-----------------------|---------------------------|
| Ceramics | Plastics/Rubber Machining |
| Compounding (CLEACOM) | Powder Coating |
| Blasting Processes | Spring Grinding |
| Die-Casting | Thermal Spraying |
| Graphite Dust | Recycling |
| Grinding/Polishing | Welding |
| Hot-dip galvanizing | Wet Painting |
| Laser/Plasma Cutting | Wire-Drawing |
| Milling Machines | Wood Products / Panels |
| Nonmetallic Minerals | |



PT

- Modular with clean air filter access
- KLR-Filter® elements
- Airflow: 3,500-16,000 cfm*



TR-1

- Stand-alone system for MQL
- Approved indoor ex- protection
- Airflow: 500-800 cfm*



UNISTAR

- Used for chip & oil combinations
- Dry-P cartridge filters
- Airflow: 800-1,800 cfm*



RF
Central Vac.

- For central vacuum applications
- Negative pressure up to 200"wg
- Airflow: 500-3,500 cfm*



JET SET

- Modular bag-house dust collector
- Bag filters in different qualities
- Airflow: 4,000-100,000+ cfm*



PRE-
SEPARATOR

- Pre-separates large, dry particles
- Stand-alone or attached to collector
- Airflow: 500-58,000 cfm*



RECLAIM

- Complete dry solution for wet paint
- Manual to fully automatic options
- Airflow: 1,000-100,000* cfm*

What's Inside a KELLER?

DRY-P



- High filtration efficiency
- Meltblown or polyester pleats
- For dust applications

FLEXI-P



- High filtration efficiency
- Pleated fiber & polyester fleece
- For semi-oily applications

MICOS-P



- High filtration efficiency
- Fine-fiber material
- For coolant / oil-mist

KLR-Filter®



- KLR- "Keller Long Run" filter elements
- Service life up to 20,000 operating hours
- Filterplate with options conducive for diverse applications (see table)
- Separation efficiency of > 99.9%

	KLR	KLR as	KLR-bran	KLR-bran as	KLR-bran pure as
Clean air emissions value < 0.5 mg/m³	✓	✓			
Clean air emissions value < 0.1 mg/m³			✓	✓	✓
Application temperature: up to 230 °F (110 °C)	✓	✓	✓	✓	✓
Cleaning pressure: max. 4 bar	✓	✓	✓	✓	✓
Including PTFE membrane			✓	✓	✓
Antistatic		✓		✓	✓
Silicone-free					✓

Other Filter Media:

Filter Bags

- Variety of application qualities
- Made of polyester needle felt
- Dry, granular, pourable dusts

Demister

- High separation efficiency
- Steel/Fine-fiber material
- Oil/coolant mist filtration

Use of the correct and optimum filter medium has considerable advantages and ensures operational reliability and cost-effectiveness. This applies both for new installations and retrofitting projects.

Mist Collection

solution for wet machining



- Individual unit for CNC machines
- Integrated pump & HEPA options
- Airflow: 500-1,500 cfm*



- Two+ machines/centralized systems
- Modular (customized) design
- Airflow: 1,500-12,500 cfm*



- Individual machine mist collection
- Floor-accessible maintenance
- Airflow: 600-1,500 cfm*



- Modular design
- Reusable wire-mesh filters
- Airflow: 2,500-20,000 cfm*

Applications:

- Grinding
- Polishing
- Deburring
- Die-Casting
- Machining
- Milling



- Automatic cleanable electrostatic separator
- High efficiency separation: sticky aerosols & fine smoke
- Airflow: 3,000-9,000 cfm*

Wet Separation

solution for challenging applications

Applications:

- Blasting Processes
- Compounding (CLEACOM)
- Die-Casting
- Forging
- Hot-dip galvanizing
- Large Shredding
- MDF Processing
- Plastics Extrusion
- Synthetic Fiber
- Wood-Based Panel



- For high dust concentrations
- Disposal by sludge conveyor
- Airflow: 2,200-16,000 cfm*



- Adjustable component placement
- Modular design for large airflow
- Airflow: 8,000-50,000 cfm*



- Dust settles in disposal container
- Recommended 1-shift operation
- Airflow: 1,500-7,000 cfm*



- Dust settles in bucket with slide-gate
- Disposal can occur in operation
- Airflow: 2,200-13,000 cfm*

*Please be advised, airflow ranges vary by unit size, design, and application.

Pro-Components

better solutions for energy & safety concerns



- Heat recovery system
- Improves cooling/heating
- Airflow: 8,000-12,500 cfm*



- Airflow monitor
- Horizontal or vertical installation
- Airflow ranges: 250-3,250 cfm*



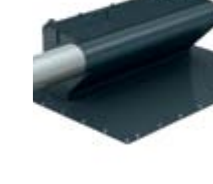
- Automatic airflow damper
- Internal airflow balancing
- Adjustable extraction efficiency



- Explosion back-pressure flap
- ATEX certified / NFPA69 compliant
- Used for organic and metal dust



- Solid state flame barrier
- Pre-separation of coolant / oil
- Airflow: max -2,100 cfm*



- Chip separator at machine tools
- Captures mist, not chips
- Airflow: 800-2,000 cfm



- Flameless explosion vent
- Approved for indoor use
- For use with metal / organic dust



Hoods \ Plates

- Capturing of fumes at source
- Made of solid welded steel
- Sizes vary per application need



Extractor Arms

- Removes fumes/dust at source
- Length varies per customer need
- 2" - 8" diameter hose



Downdraft Tables

- Heavy duty work bench
- Upper & lower bench suction
- Sizes vary per application need



Work Booths

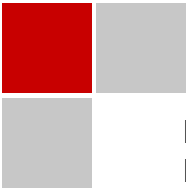
- Covered work area
- Variety of layouts available
- Noise-reduction panels



Injector Nozzle

- Injector vacuum at dust collector
- Operates with compressed air
- No electricity required

Capturing Elements

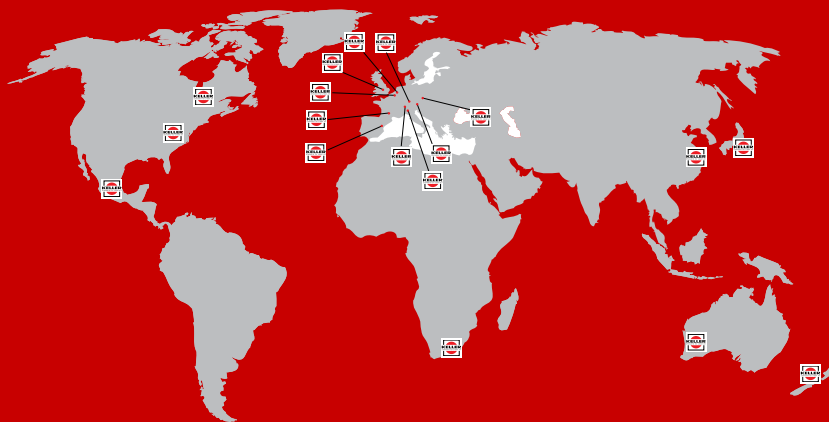
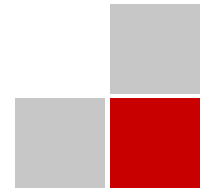


Keller USA, Inc. is a subsidiary of Keller Lufotechnik, GmbH + Co., KG, a world-wide technology company specializing in the capturing and separating of a variety of air pollutants, as well as in the reduction of emissions in industrial applications.



The Keller USA office (based in Fort Mill, SC), works closely with representatives across North America to provide customers with thorough consultations, customized product designs and assembly, exemplary service, and a dedicated after-market sales experience.

We give global operations a local feel.



Keller USA, Inc.
 2168 Carolina Place Drive
 Fort Mill, SC 29708 USA
 Phone (803) 396-2000 Fax (803) 396-2905
 E-mail info@kellerusa.com
www.kellerusa.com

With the **GREEN BALANCE** initiative, Keller commits to Global Sustainability.

We balance Technological, Social, and Economic resources to sustain the environment.

