

TASK

Over the past several years the unrolling velocity of winders and re-winders, and the capacity of the cutting blades for paper trim extraction, have steadily increased. The intensification of the production process requires an efficient and reliable extraction system.

Correct dimensioning of the total system and the utilization of specific system components ensure high availability combined with low maintenance requirements.

SOLUTION

The vacuum technology of the KL-WETVAC system has provided the ideal solution for a variety of requirements. Multiple winders, re-winders, calenders, coaters and sheeters are collectively connected to the KL WETVAC systems.

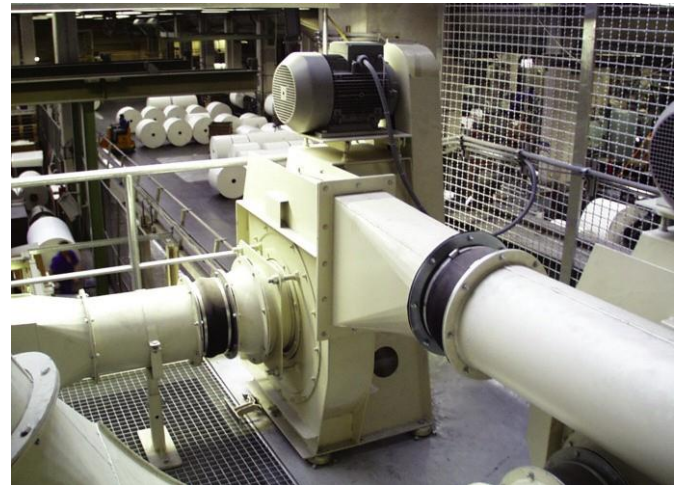
Our low maintenance injector systems or chopper fans are also suitable for high unrolling speeds or for heavy blade cutting loads.

ADVANTAGES OF THE KL WETVAC

- High availability and operational safety
- Low maintenance and abrasion
- Short amortization time
- Low operating costs
- Adaptable even to highest unrolling velocities
- Dust-free intake on the pulper

ADVANTAGES OF DRY SYSTEMS

- High availability and operating safety
- Adaptable to high unrolling speeds
- Pre-sorting waste
- Operation is independent of the paper machinery



Chopper fan trim extraction winder

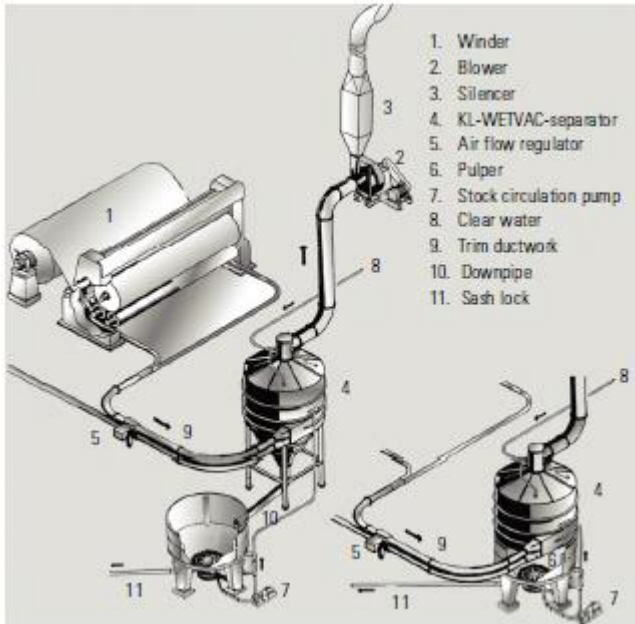


Trim collection

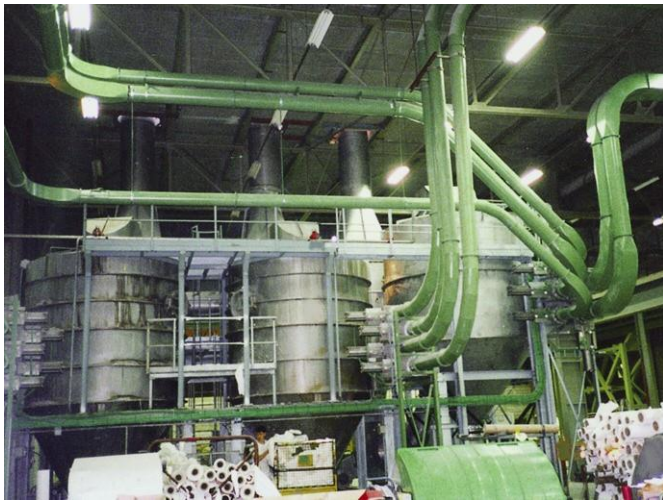
ADDITIONAL APPLICATIONS

- Dust extraction at tube cut-off saws
- Removal of sheet rejects at the sheeters
- Trim elimination at the winders
- Dust extraction at the sheeters
- Removal at roll turning machines and grinding machines
- Extraction of residue at unrolling machines

Paper Trim Extraction



Operation scheme KL-WETVAC



Trim extraction KL-WETVAC



Keller USA, Inc.
2168 Carolina Place Drive
Fort Mill, SC 29708 USA
Phone (803) 396-2000 Fax (803) 396-2905
E-mail info@kellerusa.com
www.kellerusa.com