

## CONSTRUCTION

Nozzle plates are constructed by solid welding and completely folded sheet steel. They are prepared to mount welder protection curtains (accessory).

Contain integrated exhaust nozzles and flange connections.  
Paint Finish RAL 7035, light grey.

As an example, mounting of the nozzle plates takes effect by means of thread rods, mounted above, or by means of support, mounted below.

## ADVANTAGES

- simple and light steel construction
- flat and therefore space-saving
- cost-efficient
- low weight
- easy installation
- efficient and high-performance by nozzle technology
- easy to install attachments of welding curtains available as an option

Suction velocity below the hood area (depending on local conditions: application, cross flow, fumes quantity, etc.) is between 20 fpm and 200 fpm. This is to be individually designed.

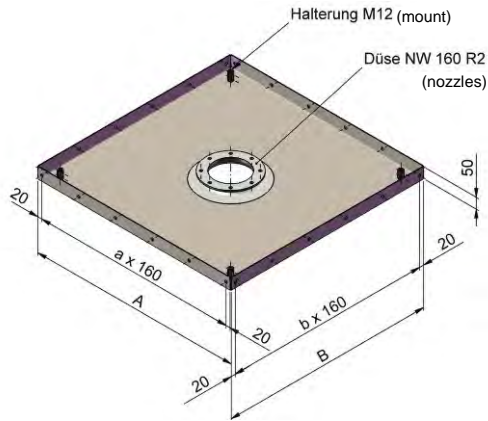
## VERSIONS

The nozzle is very versatile and a variety of configurations are possible.

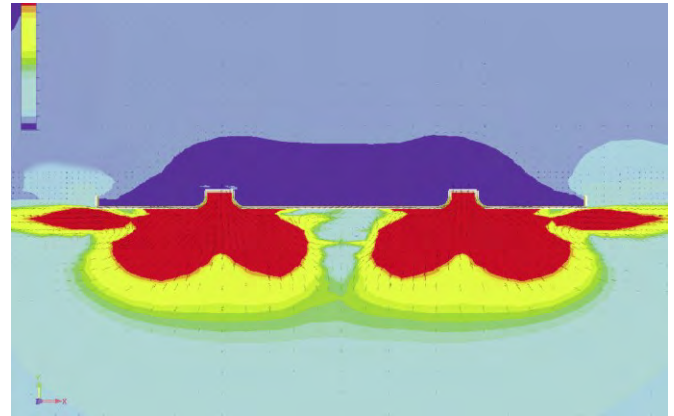
For example, the nozzle hood can be placed on rails to allow free access during use of overhead cranes for loading/unloading procedures.



## TECHNICAL DATA



## AIR FLOW SIMULATIONS



© Keller Lufttechnik - all rights reserved. Subject to modifications. 07/2010

Nozzles			840 x 840	1800 x 840	2760 x 840	3840 x 840
Area		m <sup>2</sup>	0,71	1,51	2,32	3,23
Nozzles		pcs. NW	1 160 R2	2 160 R2	3 160 R2	4 160 R2
Air volume <sup>1)</sup>	at 0,1 m/s	m <sup>3</sup> /h	254	544	835	1161
	at 0,3 m/s	m <sup>3</sup> /h	762	1633	2504	3484
	at 0,5 m/s	m <sup>3</sup> /h	1270	2722	4173	5806
Width	A	mm	840	840	840	840
Length	B	mm	840	1800	2760	3840
Sheet metal		mm	2	2	2	2
Weight		kg	13	27	41	57

<sup>1)</sup> The airflow requirement depends on the application as well as the ambience.