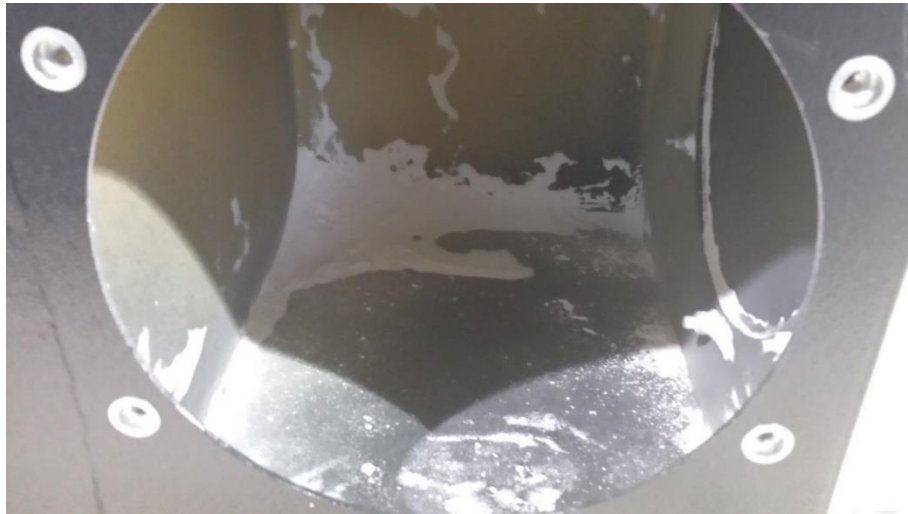

Limestone Instructions

1. After you have changed the old filters with the new, you will need to coat the filters with limestone dust.
 - This will add a protective covering to the filters and insure they last longer.
2. To do this you can simply place dust in the inlet duct of the unit.



3. Once you have done this close the blast gate to 50% to prevent damage to the filter.
 - It can be opened more as visible dust is seen inside of laser.
 - Maximum opening is 75%.
4. Run unit for 1 hour, then check dust bin for dust.
 - If no dust repeat step 2.
 - Once excess amount of dust is left in dust bin, then the filters have been coated.

